

Chapter-10: Co-ordination Process in Animal

Answer to the questions No. 1 and 2 in the light of the following stem : [All Board-18]

A group of physician doing research in the northern part of Bangladesh found that a particular gland in many of the people is swollen. The people being diseased can tolerate much mental stress.

1. Which organ of the following is the gland found? [All Board-18]

- (a) Neck (b) Throat
(c) Kidney (d) Pancreas

2. Causes of development and regulation of the two situations mentioned above : [All Board-18]

- i. Thyroxine hormone
ii. Adrenalin hormone
iii. Thymoxine hormone

Which one of the following is correct?

- (a) i and ii (b) i and iii
(c) ii and iii (d) i, ii and iii

3. Which one is a short day plant? [D.B.-17]

- (a) Cucumber (b) Jhinga
(c) Lettuce (d) Dahlia

4. Which hormone is used to control insect? [D.B.-17]

- (a) Feromen (b) Auxin
(c) Cytokinin (d) Gibberellin

5. Which is used to produce seedless fruits? [R.B.-17]

- (a) Gibberellin (b) Cytokinin
(c) Ethylene (d) Absicic acid

6. How many couples of spinal cord come out from the hole of the middle of two backbones? [R.B.-17]

- (a) 20 (b) 21
(c) 30 (d) 31

7. In which one of the following movement of locomotion is seen? [Dj.B.-17]

- (a) Pollen grain (b) Zygote
(c) Zoospore (d) Embryo

8. How many pairs of cranial nerves are originated from medulla oblongata of human brain? [Dj.B.-17]

- (a) 12 (b) 10
(c) 8 (d) 6

9. Which one is formed by a bundle of nerve fibres? [Ctg.B.-17]

- (a) Cerebellum (b) Pons
(c) Cerebrum (d) Medulla oblongata

10. Which substance is secreted by nerve cell helping in muscular movement? [S.B.-17]

- (a) Dopamin (b) Feromon
(c) Vimalin (d) Prolactin

11. Which one helps to relieve from mental pressure? [J.B.-17]

- (a) Prolactin (b) Thyroxine
(c) Adrenaline (d) Oestrogen

12. Which part of the brain is the largest part of it? [B.B.-17]

- (a) Cerebrum (b) Cerebellum
(c) Pons (d) Medulla oblongata

13. When was the drug control authority established? [B.B.-17]

- (a) 1976 (b) 1983
(c) 1989 (d) 1990

14. Feeling chest pain due to lack of blood circulation in heart is called— [D.B.-16]

- (a) Stroke (b) Angina
(c) Anaemia (d) Antharoschelerosis

15. In which cytokinin hormone of plant is present? [D.B.-16]

- (a) Flower, fruit and green coconut water
(b) Fruit, seed & green coconut water
(c) Fruit, cereal & green coconut water
(d) Cereal, seed & green coconut water

16. Which one helps to remove severe mental pressure? [D.B.-16]

- (a) Prolactin (b) Tyroxin
(c) Adrenalin (d) Estrogen

17. Where is thyroid gland located? [R.B.-16]

- (a) Brain (b) Liver
(c) Kidney (d) Trachea

18. By which one of the following stimulation is transformed one neuron to next neuron? [Ctg.B.-16]

- (a) Axon (b) Cell body
(c) Dendron (d) Synapsd

19. Which hormone is found in water of green coconut? [Ctg.B.-16]

- (a) Auxin (b) Cytokinin
(c) Gibberellin (d) Ethylene

20. Which one's activity damaged by nicotine? [Ctg.B.-16]

- (a) Nerve (b) Lung
(c) Kidney (d) Pharynx

21. Which one controls the reflex action? [Ctg.B.-16]

- (a) Brain (b) Hormone
(c) Spinal cord (d) Neuron

22. Insulin is secreted from— [S.B. 20/16]

- (a) Pituitary (b) Islets of langerhans
(c) Gonad (d) Thymus

23. Which one is day neutral plant? [S.B.-16]

- (a) Chrysanthemum (b) Jhinga
(c) Dahlia (d) Cucumber

24. Which hormone is a gaseous substance? [S.B.-16]

- (a) Ethylene (b) Cytokinin
(c) Gibberellin (d) Auxin

25. Which hormone secretes from parathyroid gland? [J.B.-16]

- (a) Insulin (b) Thymoxine
(c) Parathyroxine (d) Adrenaline

26. Which organ controls the balance of the body? [J.B.-16]

- (a) Pons (b) Cerebrum
(c) Cerebellum (d) Medulla oblongata

27. Which one is the example of curvature movement of plant? [B.B.-16]

- (a) Algae (b) Spore of fungi
(c) Sexual reproductive cell of plant
(d) Moves away of light of root

28. Which one has passed through the two neurons? [B.B.-16]

- (a) Stimulation (b) Blood
(c) Hormone (d) Enzyme

29. Which helps to blooming flower? [B.B.-16]

- (a) Auxin (b) Ethelene
(c) Florigen (d) Cytokilnin

30. Way to remedy from drug addiction — [S.B.-17]

- i. expanding moral education
ii. to manage employment
iii. forming public awareness and implementation of act properly

Which one of the following is correct?

- (a) i and ii (b) i and iii
(c) ii and iii (d) i, ii and iii

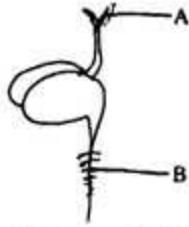
31. The part of hind brain of human is — [J.B. -17]

- i. Cortex
- ii. Cerebellum
- iii. Pons and Medulla oblongata

Which one of the following is correct?

- (a) i and ii
- (b) i and iii
- (c) ii and iii
- (d) i, ii and iii

Observe the given diagram and answer questions no. 32 and 33 : [D.B. -17]



32. Which one is found in part B?

- (a) Cytokinin and Ethylene
- (b) Gibberellin and vernaline
- (c) Ethylene and Gibberelline
- (d) Florengen and Ethylene

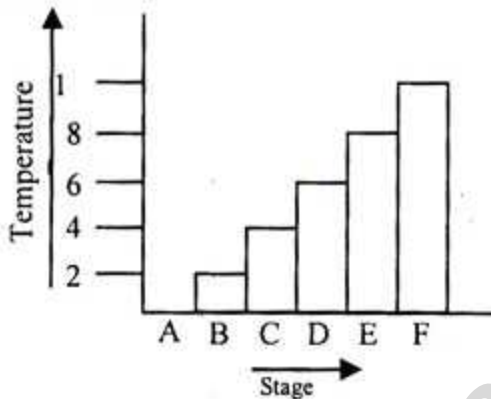
33. Working rate increase for the influence of the material present in part A —

- i. photosynthesis
- ii. respiration
- iii. osmosis

Which one is correct?

- (a) i and ii
- (b) i and iii
- (c) ii and iii
- (d) i, ii and iii

Observe the following figure properly and answer to the questions No. 34 & 35 :—



[D.B., B.B.-16]

34. In which stage of flow-chart flower initiate in germinated seed?

- (a) A
- (b) B
- (c) C
- (d) D

35. Which one is applicable for F initiating flower?

- i. Jhinga
- ii. Dahlia
- iii. Chandromollika

Which one is correct?

- (a) i and ii
- (b) i and iii
- (c) ii and iii
- (d) i, ii and iii

Read the following passage and answer to the questions 36 and 37 :—

During the study time, Jewel killed a mosquito by pats, when it was biting him at night. [C.B.-16]

36. The second activity of Jewel is controlled by—

- (a) Spinal chord
- (b) Forebrain
- (c) Midbrain
- (d) Hind brain

37. The organ directly related with the first activity of Jewel is—

- (a) covered with peritonium membrane
- (b) passes through the hole of vertebrae
- (c) white matter at the outer part and grey matter at the inner part
- (d) divided into three parts