

Chapter-2: Cell and Tissue of Organism

- Which of the following is present in animal cells?** [All Board-18]
(a) Chromoplast (b) Chloroplast (c) Cell wall (d) Centrosome **(d)**
- Which cell lacks nucleus?** [All Board-18]
(a) Tracheid (b) Companion cell (c) Mature sieve cell (d) Vessel **(c)**
- What type of epithelial tissue is found in the tracheal wall of the animals?** [All Board-18]
(a) With cilia (b) With flagella (c) With pseudopodia (d) With glands **(a)**
- What is Tunica media composed of?** [All Board-18]
(a) Connective tissue (b) Involuntary muscle (c) Simple endothelial tissue (d) Voluntary muscle **(b)**
- How many types of primary xylem?** [D.B. -17]
(a) 1 (b) 2 (c) 3 (d) 4 **(b)**
- Which is found in the animal cell?** [R.B. -17]
(a) Chloroplast (b) Chromoplast (c) Leucoplast (d) Golgi body **(d)**
- Which cells are like short tubes?** [R.B. -17]
(a) Tracheids (b) Vessels (c) Xylem Parenchyma (d) Xylem fibre **(b)**
- What kind of epithelial tissue is shown in Bowman's capsule of kidney?** [Dj.B. -17]
(a) Simple (b) Stratified (c) Pseudo stratified (d) Ciliated **(a)**
- Which one of the function of cell membrane in plant?** [Dj.B. -17]
(a) Retains the shape and size of a cell (b) Gives rigidity of a cell (c) Exchanging materials with the adjacent cell (d) Movement of water by Osmosis **(d)**
- Ascent of cell sap happens through which part?** [Cig.B. -17]
(a) Vessel (b) Tracheid (c) Sieve tube (d) Phloem fiber **(a)**
- Which provides rigidity and to conduct water and minerals in plant tissue?** [S.B. -17]
(a) Parenchyma (b) Collenchyma (c) Sclerenchyma (d) Aerenchyma **(c)**
- Which one is occurred in parenchyma tissue?** [J.B. -17]
(a) Food production (b) Give rigidity (c) Conduct water (d) Conduct minerals **(a)**
- What kind of epithelial tissue is found in respiratory system?** [J.B. -17]
(a) Simple epithelial tissue (b) Stratified epithelial tissue (c) Squamous epithelial tissue (d) Pseudo stratified tissue **(d)**
- Which one is called the stone cell?** [J.B. -17]
(a) Bast fiber (b) Surface fiber (c) Scleride (d) Wood fiber **(c)**
- Which cell is used in transporting food produced by the plant to its different parts?** [B.B. -17]
(a) Tracheids (b) Sieve tube (c) Vessel (d) Companion cell **(b)**
- Which of the following does possess cisternae?** [B.B. -17]
(a) centrosome (b) endoplasmic reticulum (c) golgi body (d) lysosome **(c)**
- Which one have no nucleus?** [D.B. -16]
(a) Cardiac muscle (b) Aerenchyma (c) Sieve cell (d) Companion cell **(c)**
- Stroma is the part of—** [D.B. -16]
(a) Cell wall (b) Chloroplast (c) Mitochondria (d) Ribosome **(b)**
- Which is the part of lymphatic system?** [R.B. -16]
(a) Tonsil (b) Intestine (c) Ear (d) Appendix **(a)**
- Which can protect the cell from the attack of the germ?** [R.B. -16]
(a) Cell vacuole (b) Nucleus (c) Lysosome (d) Centrosome **(c)**
- Which tissue is found in the integument of vertebrate animals?** [R.B. -16]
(a) Simple epithelial tissue (b) Columnar epithelial tissue (c) Stratified epithelial tissue (d) Pseudo stratified epithelial tissue **(c)**
- In the prokaryotic cell which of the following organelle is present?** [Dj.B. -16]
(a) Mitochondria (b) Ribosome (c) Lysosome (d) Plastid **(b)**
- Which one is a part of complex tissue?** [Dj.B. -16]
(a) Chlorenchyma (b) Aerenchyma (c) Companion cell (d) Antipodal cell **(c)**
- Axon is a part of which type of cell?** [Dj.B. -16]
(a) Epithelial cell (b) Neuron cell (c) Bone cell (d) Muscle cell **(b)**
- What is called the parenchyma cell of xylem tissue?** [Cig.B. -16]
(a) Xylem fiber (b) Sieve tube (c) Wood parenchyma (d) Companion cell **(c)**
- Which cells are elongated with slender and sharp ends?** [S.B. -16]
(a) Collenchyma (b) Tracheids (c) Sieve cell (d) Companion cell **(b)**
- In which tissue photosynthesis occurs?** [S.B. -16]
(a) Xylem (b) Phloem (c) Parenchyma (d) Sclerenchyma **(c)**
- Where does the pseudo stratified epithelial tissue found?** [J.B. -16]
(a) In excretory system (b) In digestive system (c) In nervous system (d) In respiratory system **(d)**
- Which ones of the following are applicable in case of parenchyma tissue?** [B.B. -17]
i. cells having thin walls
ii. intercellular spaces are there
iii. stone cells are present
Which one of the following is correct?
(a) i and ii (b) ii and iii (c) i and iii (d) i, ii and iii **(d)**
- Ribosome—** [D.B. 2016]
i. Obtained in both animal & plant cell
ii. Protect living cell from microorganism
iii. Helps in protein synthesis
Which one is correct?
(a) i and ii (b) i and iii (c) ii and iii (d) i, ii and iii **(b)**
- The characteristics of Epithelial tissue are—** [Dj.B. -16]
i. the cell lie closely
ii. side by side on a basement membrane
iii. the amount of matrix is much more
Which one is correct?
(a) i & ii (b) i & iii (c) ii & iii (d) i, ii & iii **(a)**

32. In the cell of blue green algae— [Ctg.B.-16]

- i. well organized nucleus is absent
- ii. Mitochondria is absent
- iii. DNA or RNA is present

Which one is correct?

- (a) i and ii
- (b) i and iii
- (c) ii and iii
- (d) i, ii and iii

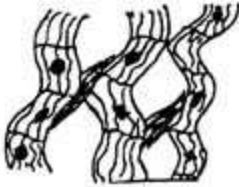
33. Plasmalemma has— [S.B.-16]

- i. Double-layer
- ii. Carbohydrate and protein
- iii. Microvilli

Which one of the following is correct?

- (a) i, ii
- (b) i, iii
- (c) ii, iii
- (d) i, ii and iii

Answer to the question no. 34 and 35 from the following picture : [R.B. -17]



34. What is the characteristic of the muscle of the above directed picture?

- (a) The absence of Nucleus
- (b) Intercalated disk
- (c) Formed by voluntary muscle
- (d) Skeletal muscle

35. According to the work, involuntary muscle is similar to cardiac muscle, the reason may be —

- i. the limbs of interior body take part in flowing
- ii. the activities of the both are not willing of the animal
- iii. provided with transverse striations

Which one of the following is correct?

- (a) i and ii
- (b) i and iii
- (c) ii and iii
- (d) i, ii and iii

Look at the picture and answer the questions no. 36 and 37 :— [S.B. -17]



36. What's the name of B picture?

- (a) Vessel
- (b) Trachid
- (c) Xylem fibers
- (d) Phloem

37. In stem A, B, C picture cells —

- i. are the element of xylem in plant conducting tissue

- ii. conducts water and minerals to leaves from soil
- iii. takes CO₂ and disposes O₂

Which one of the following is correct?

- (a) i and ii
- (b) ii and iii
- (c) i and iii
- (d) i, ii and iii

Observe the following diagram and answer to the questions no. 38 – 39 :—



Diagram-P

38. Diagram P indicates which organelle?

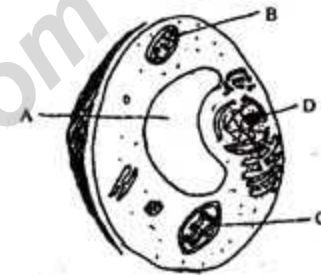
- (a) Ribosome
- (b) Lysosome
- (c) Centrosome
- (d) Golgi body

39. What role play the diagram-P in animal cell?

- i. Hormone secretion
- ii. Cell division
- iii. Storage of protein

Which one is correct?

- (a) i and ii
- (b) i and iii
- (c) ii and iii
- (d) i, ii and iii



Observe the above figure and answer to the questions 40-41:— [C.B.-16]

40. The Name of 'B' organelle is—

- (a) Mitochondria
- (b) Ribosome
- (c) Lysosome
- (d) Golgibodies

41. Which one is changed its color due to environmental differences?

- (a) A
- (b) B
- (c) C
- (d) D

42. The organelles which differentiate the animal cell from plant cell mentioned in the stem are—

- i. A
- ii. B
- iii. C

Which one is correct?

- (a) i and ii
- (b) i and iii
- (c) ii and iii
- (d) i, ii and iii