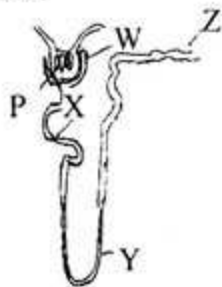


## Chapter 8: Human Excretion

1. What does develop renal papilla by being expanded?  
[All Board-18]  
 (a) Capsule (b) Pelvis (c) Renal pyramid (d) Cortex (c)
  2. Which of the following produces alkaline urine? [All Board-18]  
 (a) Blackberry (b) Pulse (c) Nuts (d) Bean seeds (a)
  3. Urine colour become yellow in the presence of which materials mentioned below? [D.B.-17]  
 (a) Urea (b) Uric acid (c) Creatinin (d) Urochrome (d)
  4. How many renal pyramids are generally in the Medulla? [Dj.B.-17]  
 (a) 8—12 (b) 10—14 (c) 16—20 (d) 22—26 (a)
  5. What will happen if the blood becomes more dilute? [Dj.B.-17]  
 (a) Calcium and nitrogen are increased (b) Increase of nitrogen and harm of cell (c) Burning when pass urine and disturbance in blood transportation (d) To increase protein & stop urination (b)
  6. Which one of the following is formed by the extension of the apex of renal pyramid? [Ctg.B.-17]  
 (a) Glomerulus (b) Capsule (c) Collecting tubule (d) Papilla (d)
  7. What is the essential condition to kidney transplantation? [S.B.-17]  
 (a) Nearest relative (b) Blood relative (c) Tissue match (d) Blood group match (c)
  8. Which internal organ discharges waste materials of blood? [J.B.-17]  
 (a) Heart (b) Lung (c) Kidney (d) Liver (c)
  9. What is the concave part of a kidney called? [B.B.-17]  
 (a) renal pelvis (b) hilum (c) medulla (d) cortex (b)
  10. How many parts is a renal tubule divided into? [B.B.-17]  
 (a) 2 (b) 3 (c) 4 (d) 5 (b)
  11. In the following which makes the colour of urine light yellow? [D.B.-16; B.B.-16]  
 (a) Urea (b) Creatinine (c) Ammonia (d) Urochrome (d)
  12. Which element in blood will be increased due to the kidney failure? [R.B. 2016]  
 (a) Uric acid (b) Creatinine (c) Urea (d) Ammonia (b)
  13. Which one is the cause of increasing the acid properties of urine? [C.B.-16]  
 (a) Sugar (b) Fat (c) Fish (d) Coffee (c)
  14. Malpighian body of kidney is composed of which parts? [Ctg.B.-16]  
 (a) Glomerulus and renal tubule (b) Bowman's capsule and renal tubule (c) Renal tubule and renal corpuscle (d) Bowman's capsule and glomerulus (d)
  15. What is the reason for the colour of urine? [S.B.-16]  
 (a) Urea (b) Uric acid (c) Creatanine (d) Urochrome (d)
  16. What is the reason for kidney failure? [S.B.-16]  
 (a) Cancer (b) AIDS (c) Diabetes (d) Asthma (c)
  17. What is the characteristics of dialysis tube? [J.B.-16]  
 (a) Permeable (b) Non-permeable (c) Semi-permeable (d) Partial semi-permeable (d)
  18. In which part of excretory system liquid substances are filtered? [J.B.-16]  
 (a) In medulla (b) In pelvis (c) In ureter (d) In glomerulus (d)
  19. The parts of the renal tubule are — [R.B.-17]  
 i. Proximal convoluted tubule  
 ii. Henle's loop  
 iii. Distal convoluted tubule  
 Which one of the following is correct?  
 (a) i and ii (b) ii and iii (c) i and iii (d) i, ii and iii (d)
  20. The modern process of removal of the stone of kidney is — [Ctg.B.-17]  
 i. ureteroscopic process  
 ii. ultrasonic lithtripsi  
 iii. surgical operation  
 Which one is correct?  
 (a) i and ii (b) i and iii (c) ii and iii (d) i, ii and iii (d)
  21. Stone will form in kidney due to — [C.B. 2016]  
 i. increase of body weight  
 ii. drink insufficient amount of water  
 iii. eating excess animal protein  
 Which one is correct?  
 (a) i and ii (b) i and iii (c) ii and iii (d) i, ii and iii (d)
  22. Modern system to remove the kidney stone — [Ctg.B. 2016]  
 i. Uteroscopic  
 ii. Ultrasonic lithtripsi  
 iii. Surgical operation  
 Which one is correct?  
 (a) i and ii (b) ii and iii (c) i and iii (d) i, ii and iii (d)
- Pay heed to the figure and answer the next 23 and 24 questions :
- The diagram shows a cross-section of a nephron. Part 'A' points to the glomerulus, a cluster of capillaries. Part 'B' points to the Bowman's capsule, which surrounds the glomerulus. The renal tubule is shown extending from the capsule.
23. What is the type of blood that are found in the part 'A' of the figure?  
 (a) Blood with CO<sub>2</sub> (b) Blood without O<sub>2</sub> (c) Blood with O<sub>2</sub> (d) Blood with urine (d)
  24. The 'B' part of the figure is —  
 i. Composed by epithelial tissue  
 ii. Remain engage infiltralian activity  
 iii. A part of renal corpuscle  
 Which one is correct?  
 (a) i and ii (b) ii and iii (c) i and iii (d) i, ii and iii (d)

Observe the following diagram and answer to the questions no. 25-27:



[J.B.-16]

25. What is the name of P marked part of the diagram?

- (a) Proximal convoluted tubule
- (b) Distal convoluted tubule
- (c) Bowman's capsule
- (d) Glomerulus

26. What is collectively called the P and W marked part of the diagram? [J.B.-16]

- (a) Bowman's capsule
- (b) Renal corpuscle
- (c) Collecting duct
- (d) Afferent arteriole

27. What is called the X, Y and Z marked part collectively?

- (a) Renal tubule
- (b) Renal corpuscle
- (c) Renal system
- (d) Renal capsule

(d)

(b)

(a)

Teachingbd24.com