

Model Question of SSC Examination 2020 for All Board

Biology

Subject Code

1	3	8
---	---	---

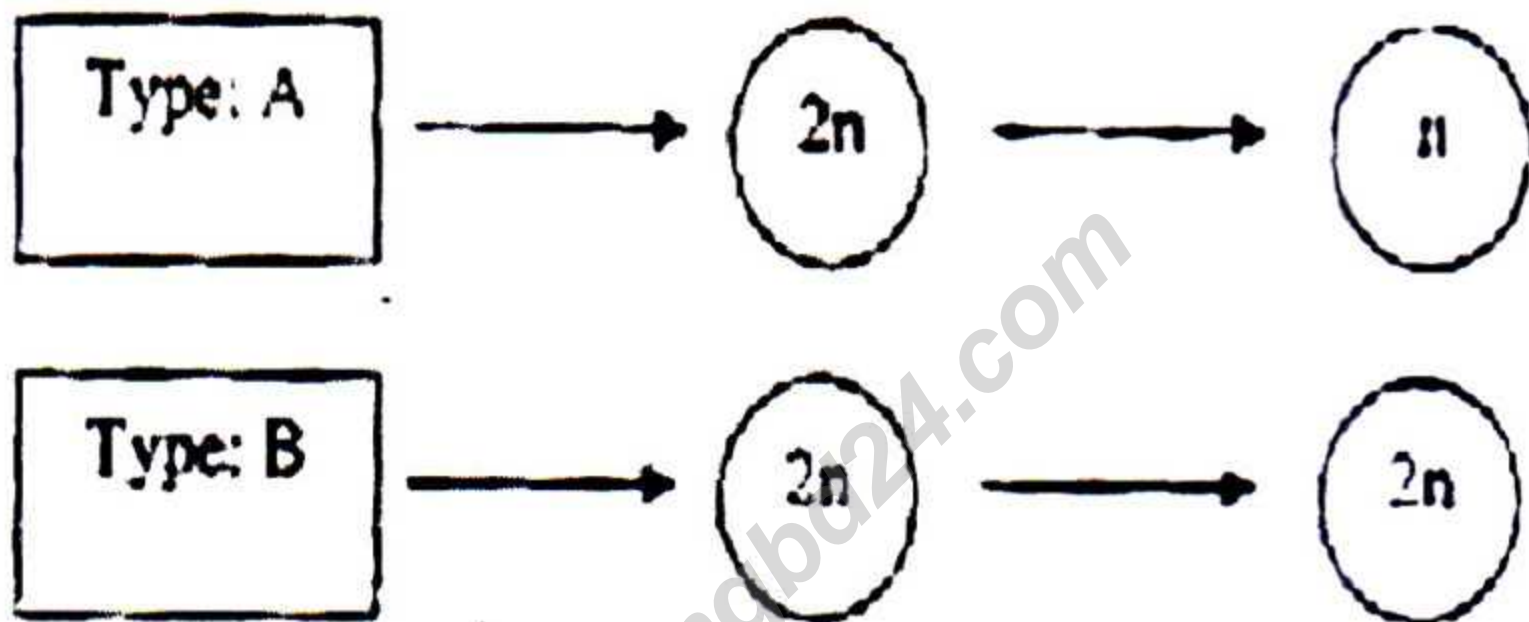
Time — 2 hours 35 minutes

Creative Essay Type

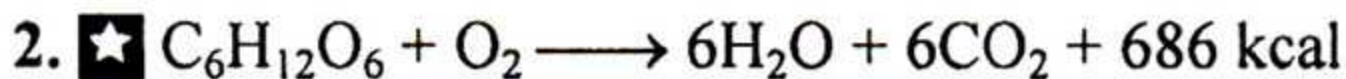
Full marks — 50

[N.B. -The figures in the right margin indicate full marks. Read the stems attentively and answer any five of the following questions.]

1. ►



- What is Interphase? 1
- What do you mean by somatic cell? 2
- Explain the process occurs in Type-A. 3
- According to above two stems which is responsible for qualitative features of organisms remain unchanged? Analyze it. 4



- Which is called biological coin? 1
- What do you mean by macro element? 2

- c. How does the reaction will be changed in absence of oxygen? 3
- d. Analyze the importance of above process. 4

3. ►



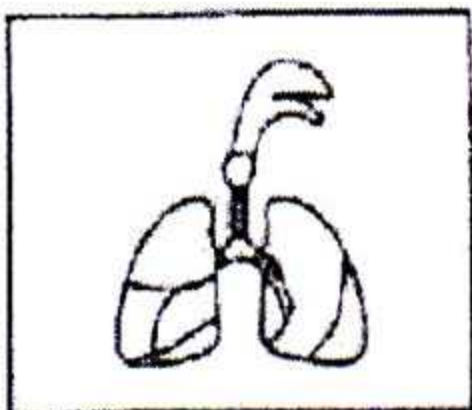
Figure-X

- a. Mention the example of colloidal substance. 1
- b. What do you mean by phloem translocation? 2
- c. The physiological process occurs in absence of sunlight during day in the special organelle of each cell of figure 'X'. Explain it. 3
- d. Analyze with explanation the role figure 'X' in all tyeps living organisms. 4

4. ► [Bacteria] [Algae] [Fungi] [Leguminous plant]
 A B C D

- a. Write down the example of scavenger? 1
- b. What do you mean by energy flow? 2

- c. Explain the characteristics of kingdom according to above stem "B"? 3
- d. Analyze-the interdependence process including environmental balance between A & D and B & C. 4
5. ► A woman "X" is 34 years old, height is 167 cm and weight is 96 kg.
- a. What is basic metabolic energy? 1
- b. What do you mean by Harris Benedict's formula? 2
- c. What is the BMI of X? 3
- d. Analyze the BMR of X. 4
6. ★ Human have a msucle made strong pumping organ to circulate the blood. Artery and vein are the vesseles for reaching the blood to a specific place.
- a. What is Rheumatic fever? 1
- b. What do you mean by hypertension? 2
- c. What are the differences between mentioned two vessels? 3
- d. Describe the circulation process through the strong organ mentioned in the stem. 4
7. ►



P

Asthma, Bronchitis
and
Tuberculosis

Q

- a. What is Tumour? 1
- b. What do you mean by Cancer? 2
- c. Describe above mentioned mechanism in the stem "P". 3
- d. Describe the Symptoms and preventive measure of mentioned diseases in the stem "Q". 4

8. ★

Reflex action is an automatic reaction.

X



Y

- a. What is hormone? 1
- b. What do you mean by diabetes? 2
- c. Describe the name of secreted hormone and functions of above glands in the stem "Y". 3
- d. Mentioned comments in the X a sudden response. Analyze it. 4

[NB. Answer all the questions. Each question carries one mark. Block fully, with a ball point pen, the circle of the letter that stands for the correct/best answer in the "Answer Sheet" for the Multiple Choice Questions Examination.]

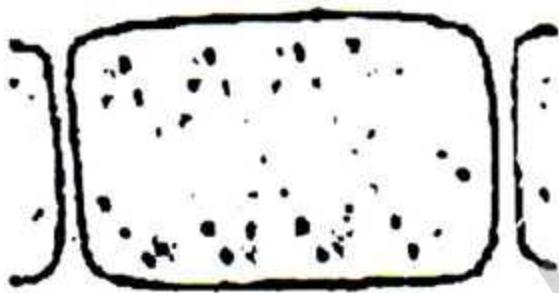
1. Which topic is discussed in the subject 'Ecology'?

- (a) Environmental management of organisms
- (b) Development of life & organisms
- (c) Relationship between organisms & environment
- (d) Geographical distribution of organisms

2. ★ 'Penicillium' belongs to which kingdom?

- (a) Monera
- (b) Protista
- (c) Fungi
- (d) Plantae

Read the stem and answer the following questions no 3, 4 and 5.



3. Above stem belongs to which kingdom?

- (a) Monera
- (b) Protista
- (c) Fungi
- (d) Plantae

4. Above plant —

- i. has developed embryo
- ii. is an Archigoniate
- iii. is a Flowering plant

Which one is correct?

- (a) i & ii
- (b) ii & iii
- (c) i & iii
- (d) i, ii & iii

5. Which organism is similar to above stem?

- (a) Moss
- (b) Bacteria
- (c) Diatom
- (d) Mushroom

6. Which is lack of nucleus?

- (a) Neuron
- (b) Sieve cell
- (c) Gland cell
- (d) Pollen cell

7. Which cell is belongs to excretory tissue?

- (a) Neuron
- (b) Sieve cell
- (c) Gland cell
- (d) Pollen cell

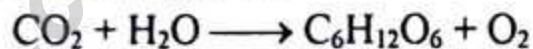
8. ★ Which tissue situated in leaf vein & petioles?

- (a) Parenchyma
- (b) Collenchyma
- (c) Sclerenchyma
- (d) Scleride

9. Which is primordial germinal cell?

- (a) Root
- (b) Anther
- (c) Corolla
- (d) Epicalyx

Read the stem and answer the following questions no 10 and 11.



10. Which is the process shown in above stem —

- (a) Photosynthesis
- (b) Photorespiration
- (c) Respiration
- (d) Replication

11. Which is not related with above stem?

- (a) Sunlight
- (b) Plastid
- (c) Root
- (d) Iron

12. Which element plant take up from atmosphere?

- (a) Carbon di oxide
- (b) Potassium
- (c) Calcium
- (d) Hydrogen

13. ★ What is the scientific name of the oriental Magpic-Robin?

- (a) Bufo melanostyictus
- (b) Copsychus saularis
- (c) Periplaneta Americana
- (d) Apis cerana

14. Tonsil belongs to which system?

- (a) Respiratory
- (b) Circulatory
- (c) Lymphatic
- (d) Excretory

15. Intestinal peristalsis occurred by —

- i. involuntary muscle
- ii. smooth muscle
- iii. unmarked smooth muscle

Which one is correct?

- (a) i & ii
- (b) i & iii
- (c) ii & iii
- (d) i, ii & iii

16. What is the function of minerals?

- (a) Enhance the chemical reaction
- (b) Regulates the cell activity
- (c) Takes part in various organic functions
- (d) Helps in producing energy

17. ★ Which food reduces of cancer to some extent?

- (a) Ghee
- (b) Potato
- (c) Fish
- (d) outer covering of fruits

18. Which one is the symptom of anemia?

- (a) Loss of appetite
- (b) everything is visibly hazy
- (c) Increase of hunger
- (d) Intolerance to cold

19. Insomnia is common for which two diseases?

- (a) Rickets and Anemia
- (b) Night blindness and Toxic goiter
- (c) simple goiter and Rickets
- (d) Simple ogiter and anemia

Rupa's BMI is 32.5 and she is not suffering by any disease.

20. On the basis of the stem what is your advice to Rupa?

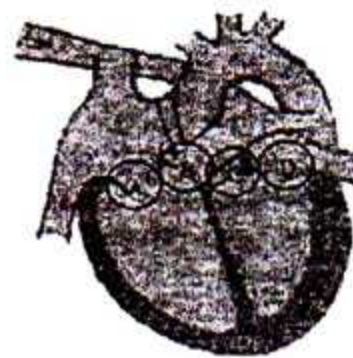
- (a) As she is not suffering by any may keep it up
- (b) To decrease body weight physical work is necessary
- (c) Death risk I think doctor's advice in necessary
- (d) Physical work and selection of food is necessary

21. Which antibody remains in the Blood group AB?

- (a) a
- (b) b

(c) a, b

(d) No antibodies

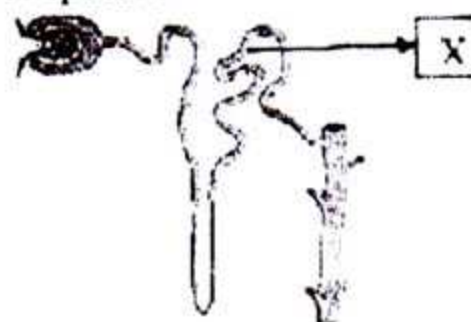


22. What is the position of tricuspid valve?

- (a) A
- (b) B
- (c) C
- (d) D

23. ★ Which are the signs and symptoms of lung cancer?

- (a) Asthm, frequently fever, gradual loss of weight, loss of appetite, pain in bone, Jaundice
- (b) Chest pain, Evening sweat and rise of low fever, loss of weight, sometimes cough up blood
- (c) Coughing, High fever, breathing distress, chest pain, whizzing sound in the cheast
- (d) Cough, breating distress, sever chest pian, cannot take solid food, secretion of sputum



24. What is the name of the "X" of above stem?

- (a) Proximal convoluted tubule
- (b) Distal convoluted tubule
- (c) Collecting tubule
- (d) Descendings limb

25. Which organ act as the kidney and lungs for embryo?

- (a) Uterine wall
- (b) Placenta
- (c) Embryonic membrane
- (d) umbilical cord

Ans.	1	(c)	2	(c)	3	(d)	4	(a)	5	(a)	6	(b)	7	(c)	8	(d)	9	(b)	10	(a)	11	(d)	12	(a)	13	(b)
	14	(c)	15	(a)	16	(c)	17	(d)	18	(a)	19	(d)	20	(d)	21	(d)	22	(b)	23	(a)	24	(b)	25	(b)		